

PROGNOSTIC FACTORS FOR SURVIVAL AFTER SURGERY OF METASTATIC SPINAL CORD COMPRESSION

Sander Dijkstra, dep. orthopedic surgery

Toine Hazen, dep. orthopedic surgery

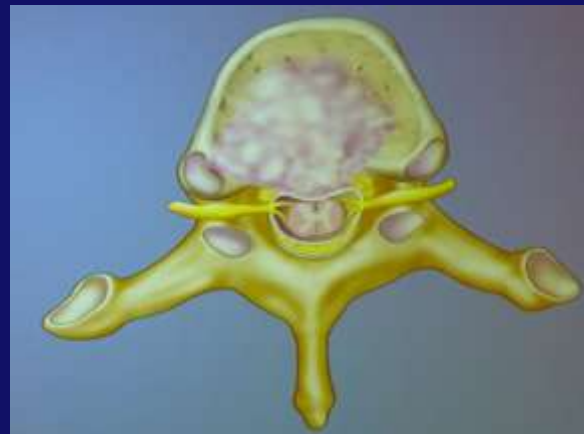
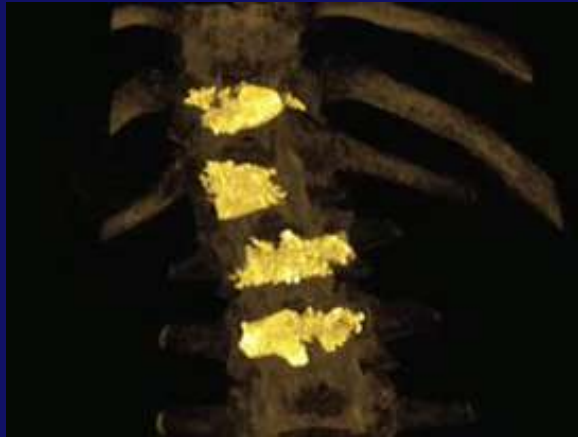
Mark Arts, dep. neurosurgery

Wilco Peul, dep. neurosurgery

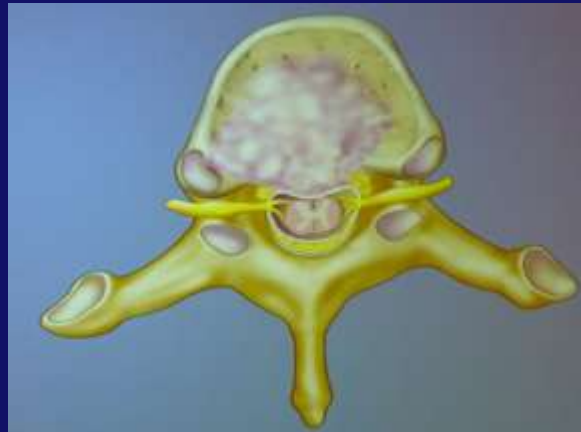
Willem Pondaag, dep. neurosurgery



TUMOUR DESTRUCTION



TUMOUR DESTRUCTION

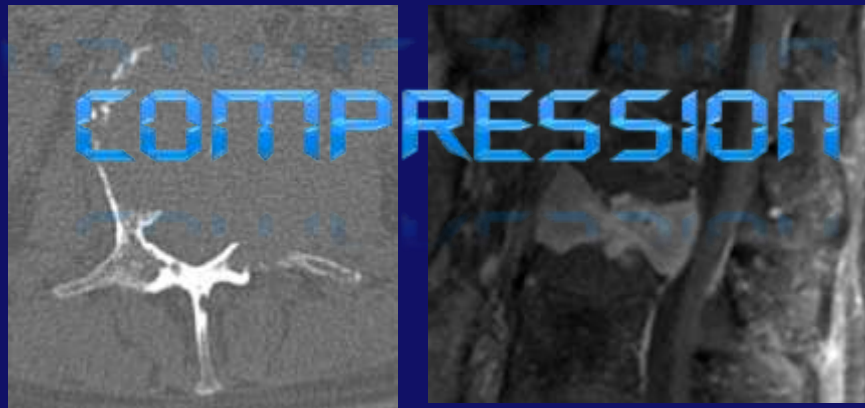


SURVIVAL

	vdLinden	Tokuhashi	Bauer	Tomita
Surgery		X	X	X
Radiationtherapy	X			
Primary Tumour	X	X	X	X
Karnofski	X	X		
Visceral Meta's	X	X	X	X
Bone meta's		X		X
Amount sites		X	X	X
Frankel		X		X

	vdLinden	Tokuhashi	Bauer	Tomita
Surgery		X	X	X
Radiationtherapy	X			
Primary Tumour	X	X	X	X
Karnofski	X	X		
Visceral Meta's	X	X	X	X
Bone meta's		X		X
Amount sites		X	X	X
Frankel		X		X

TO ESTABLISH PROGNOSTIC
FACTORS FOR SURVIVAL AFTER
SURGERY OF
METASTATIC SPINAL CORD



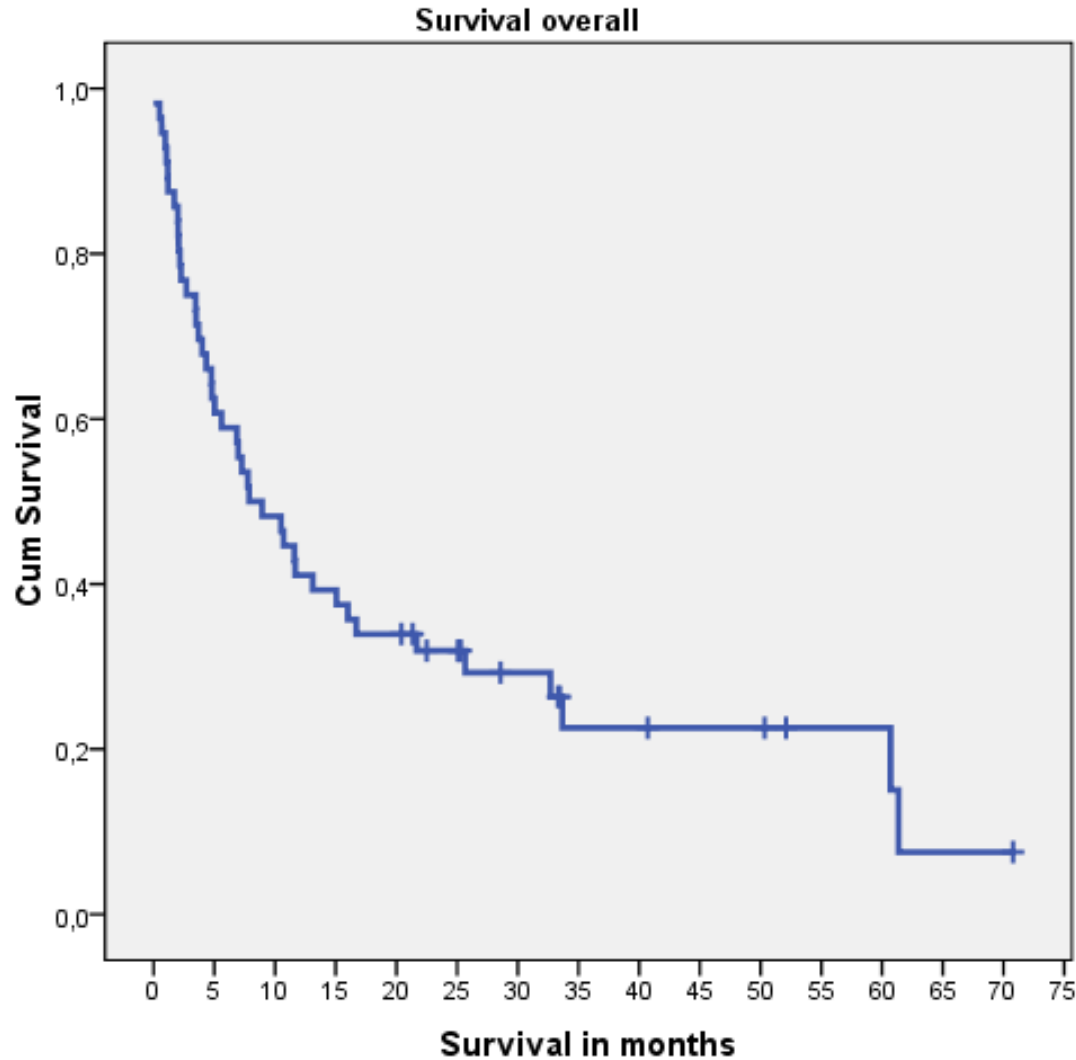
COMPRESSION

- 56 Patients
- MESCC between 2001 – 2007
- Type of surgery:
 - 16 en-bloc
 - 40 intralesional excision
- Two centers:
 - Leiden: LUMC (n=22)
 - The Hague: MCH Westeinde (n=34)
- Mean age 57 years (34-76)

	site MESCC	
	Frequency	Percent
Cervical	14	25,0
Thoracal	31	55,4
Lumbal	11	19,6
Total	56	100,0

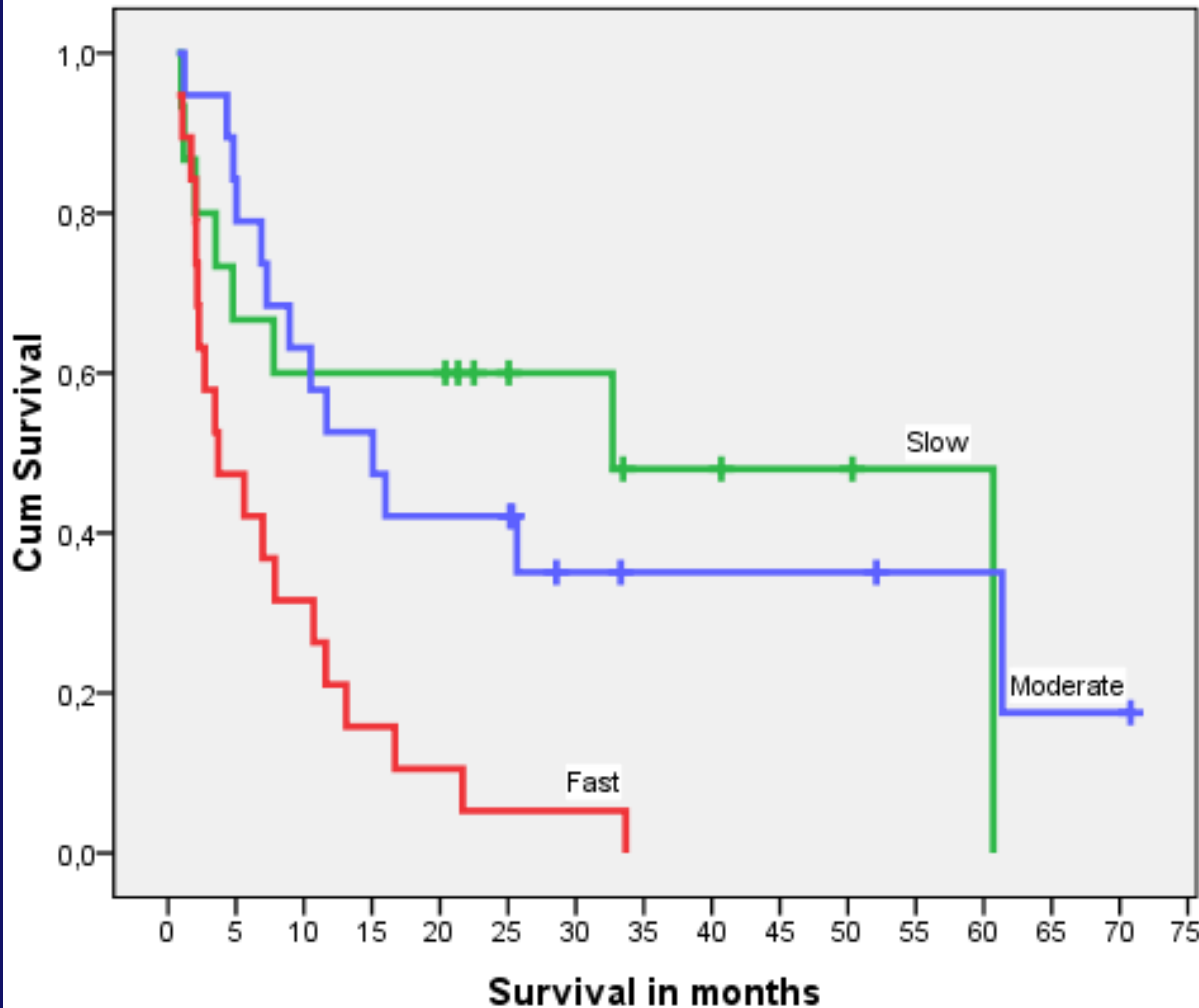
Primary tumour

	Frequency	Percent
Renal	13	23,2
Breast	11	19,6
Lung	9	16,1
GE	8	14,3
Prostate	2	3,6
Thyroid	3	5,4
Sarcomas	4	7,1
Other	6	10,7
Total	56	100,0



- Median survival 8 months
- 50% died within 9 months

Survival Tomita ranking



Grade 1 (slow):

breast, prostate, thyroid

→ n=16

32 months

Grade 2 (moderate):

renal, TNE, sarcoma,

→ n=19

15 months

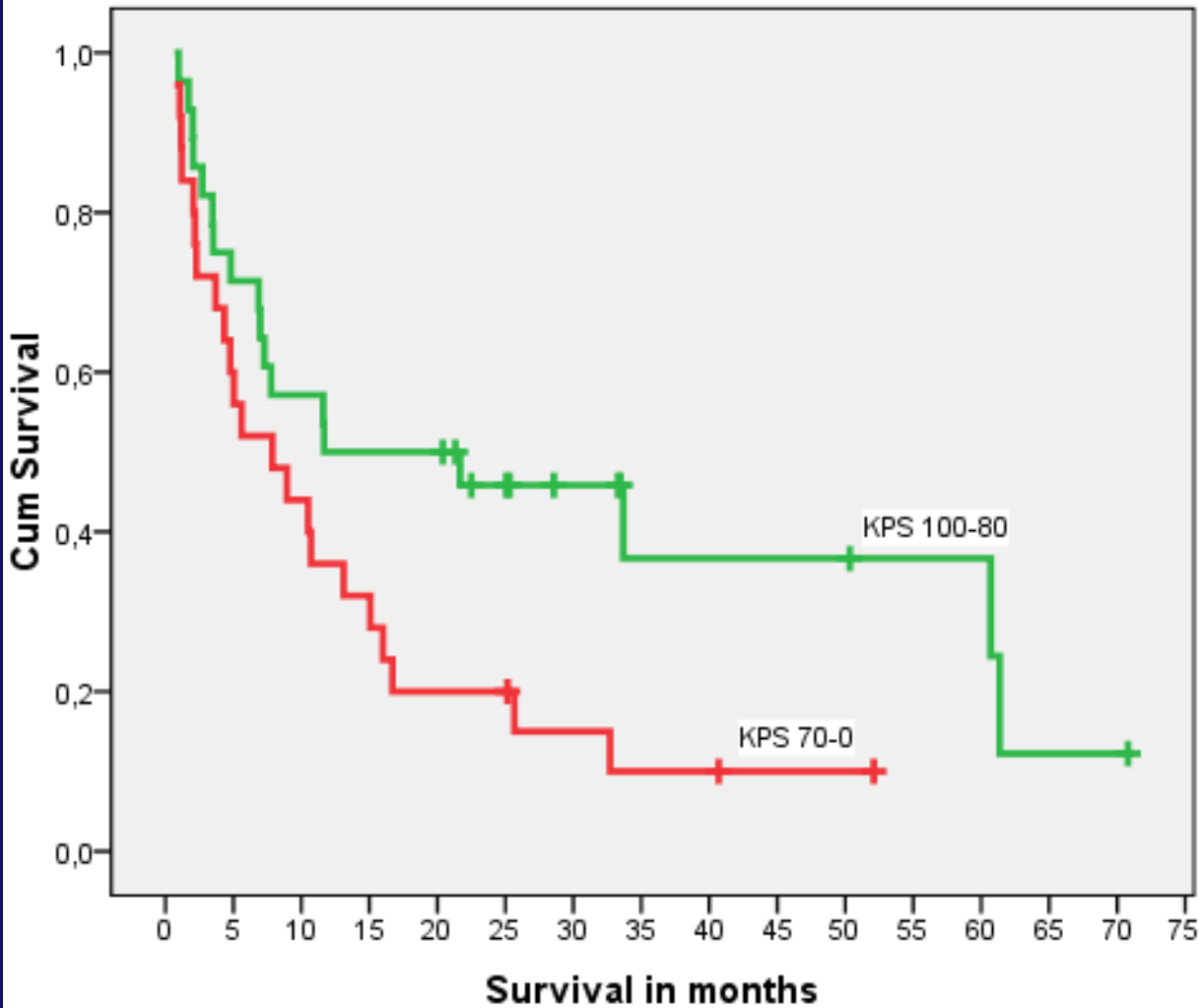
Grade 3 (fast):

lung, GE, melanoma

→ n=21

3.5 months

Survival Karnofski



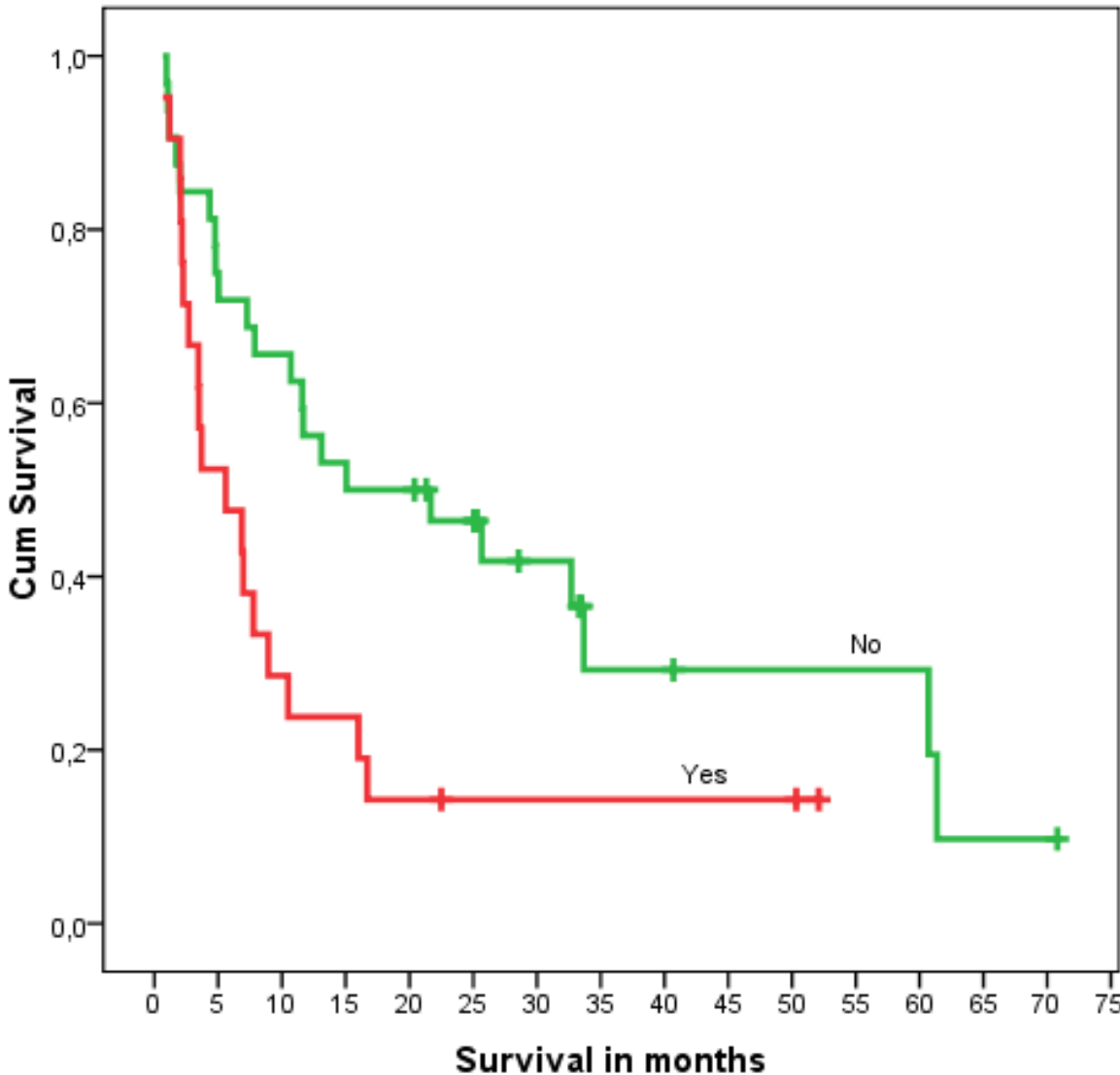
- Two groups

100% - 80% (n = 29)

70% - 0% (n = 27)

- $p = 0,033$

Survival visceral metastases



- 21/56 (38 %)

Location	Frequency
Lung	15
Liver	6
Thyroid gland	1
Adrenal	1
Total	21

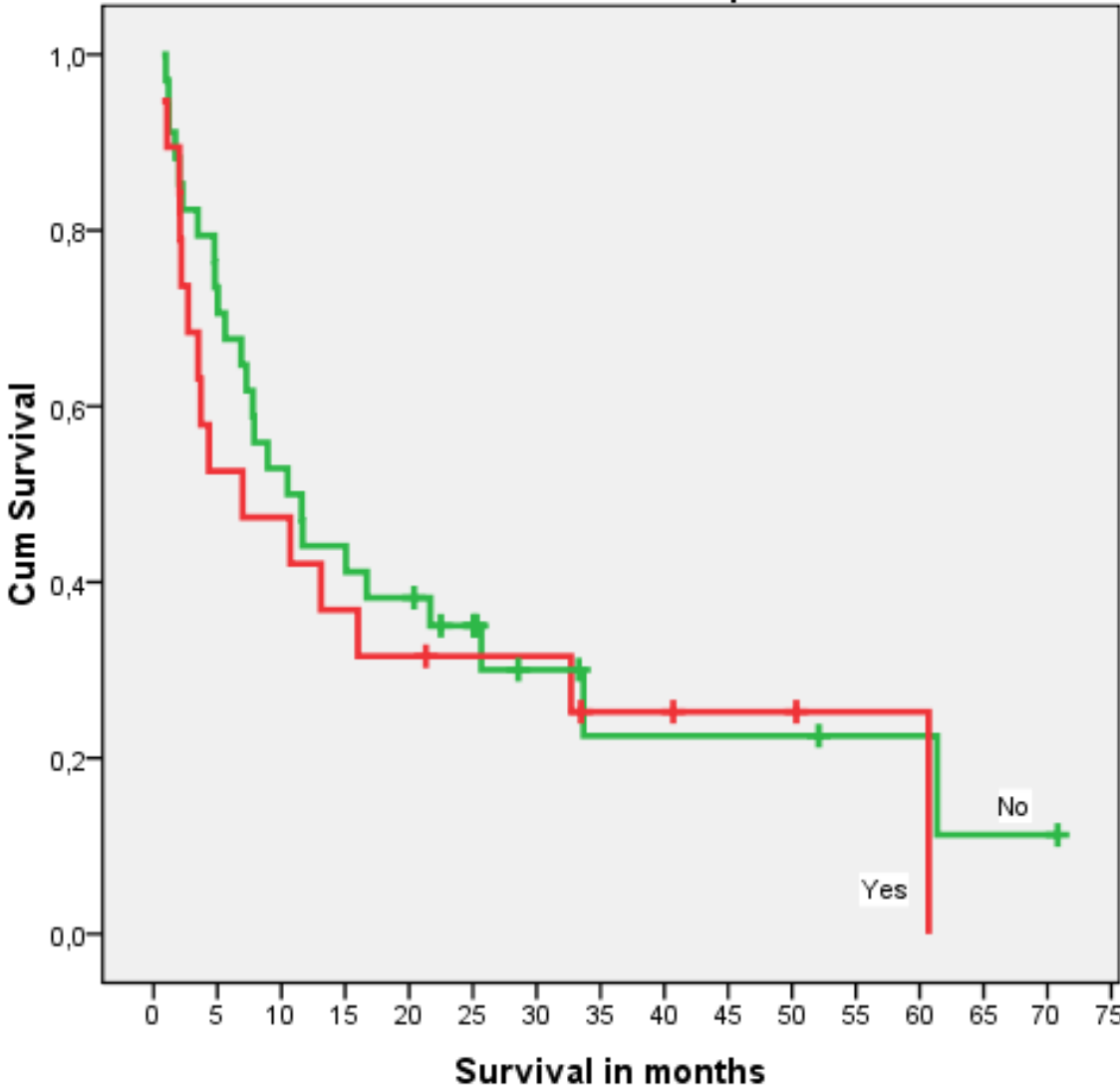
- Survival:

- Yes: 5,5 months

- No: 15 months

- $p = 0,017$

Survival bone metastases extraspinal



- 20 / 56 = 36%

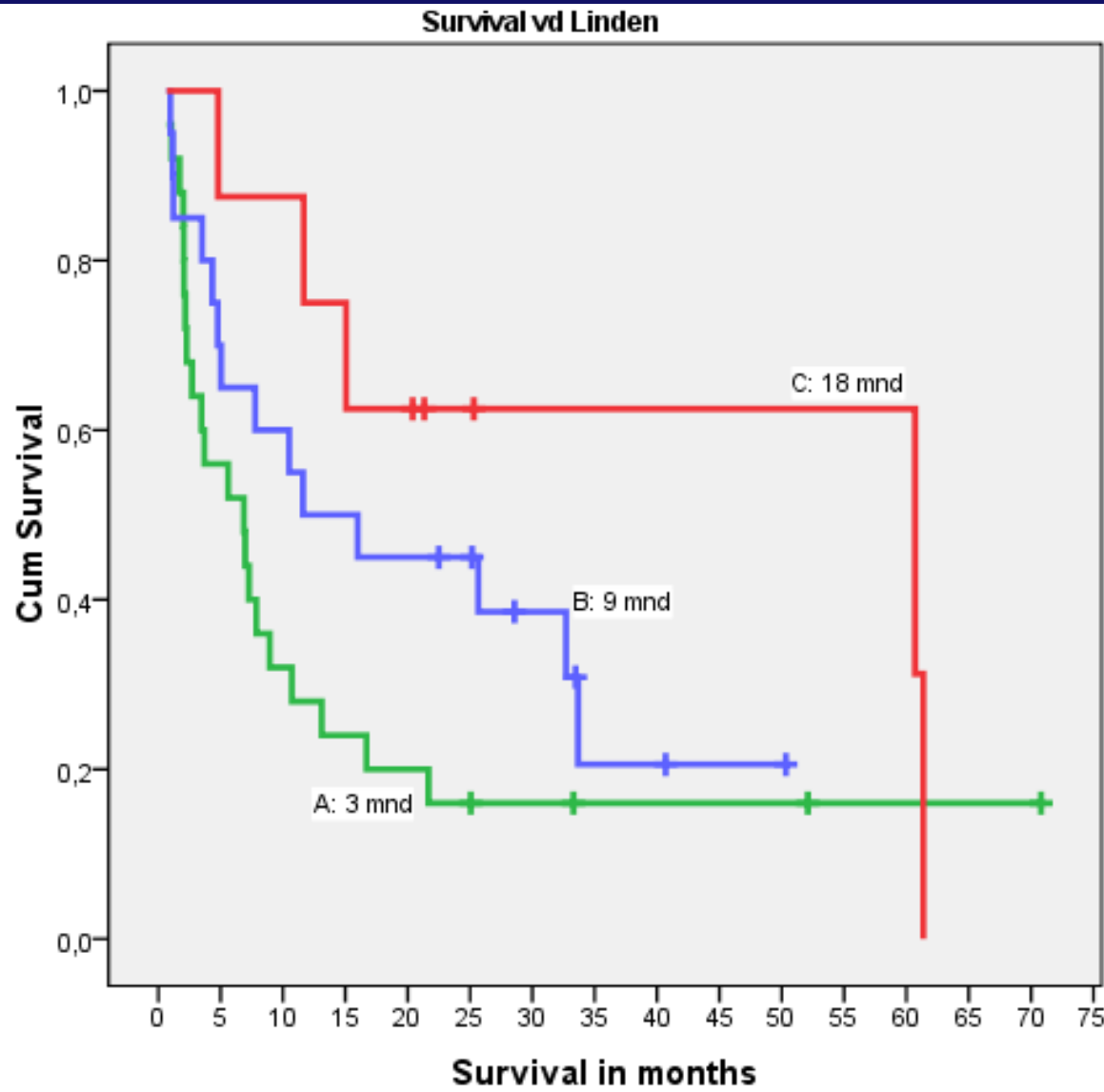
- p = 0,494

	vdLinden	Tokuhashi	Bauer	Tomita	LUMCH
Primary Tumour	X	X	X	X	p < 0,001
Karnofski	X	X			p = 0,033
Visceral Meta's	X	X	X	X	p = 0,017
Bone meta's		X		X	p = 0,494
Amount sites		X	X	X	p = 0,744
Frankel		X		X	p = 0,834

Prognostic factors	Points
KPS ^a	
80-100	2
50-70	1
20-40	0
Primary tumor	
Breast	3
Prostate	2
Lung	1
Other	0
Visceral metastases	
No	1
Yes	0
Group A	
	0-3
Group B	
	4-5
Group C	
	6

Pitfalls:

- Radiotherapeutic treatment
- Exclusion of
 - Cervical site
 - Renal cell carcinoma
 - Neurological deficit
 - Fracture



- Survival in this study

A (n=25): 5,5 months

B (n=20): 11,5

C (n=8): 60

- Between groups

- A vs. B $p = 0,127$

- A vs. C $p = 0,049$

- B vs. C $p = 0,160$

Prognostic factors for survival after surgery of MESCC is depicted in **vd linden modified**:

- **Primary tumours** 3 groups according to Tomita
- **Karnofski score** 2 groups (100-80% vs < 80%)
- **Visceral metastases** 2 groups (yes vs no)
- Frankel score and bone metastases are not related to survival
- EMSOS Multi center study?



LEIDS UNIVERSITAIR MEDISCH CENTRUM

LEIDEN

Welcomes you to

1ST CHONDROSARCOMA CONGRESS

Tribute to Antonie Taminiau

February 11th 2011

